

Anzo Express

Anzo Express is the easiest, most flexible way to connect data residing in multiple spreadsheets and relational databases together for collecting data, collaborating, or creating up-to-date reports.

Download Anzo Express and get started for free: <http://bit.ly/L2DDmD>

Everybody knows how to use Microsoft Excel. And despite decades of improvement in data management software for the enterprise, business users still rely on Excel to run many critical day-to-day operations. Data resides in spreadsheets for key activities ranging from project management to customer relationship management to budgeting to supply chain management. Critically, this data is used to create reports that *drive decisions* at every level of your organization.

Anzo Express is the first product to bring true collaboration to Microsoft Excel. Instead of relying on email to share documents or copy & paste to bring data from one document to another, Anzo links data at the element level within spreadsheets to ensure that all data everywhere is in sync. If you update data in one place, Anzo ensures that it's updated everywhere else automatically.

Use Anzo Express to:

- **Collaborate.** Stop relying on email or a shared drive. Changes made to data in one spreadsheet are automatically reflected in any other spreadsheet or database that references the same information.
- **Collect Data.** Create dynamic forms right within Excel that can be automatically filled in based on information already in Anzo or other spreadsheets. Send the form out to users to keep information in sync and up to date.
- **Create Reports.** Create interactive reports both in Microsoft Excel and using a Web-based dashboard tool that always reflect the freshest data. As data is updated in databases or spreadsheets, the reports are updated automatically.

Turn over to read more about what you can do with the Anzo Express product suite.

Powered by Semantics

Think about how you use Excel:

1. Open Excel
2. Type stuff in

Traditional technologies lack the flexibility to deal with this chaotic world, since typical databases and reporting tools need structure before data.

Semantic Web technologies were designed to handle the rapidly changing pace of the Web and thrive in this environment.

Moreover, they present information in the language of the user, enabling greater self-service.



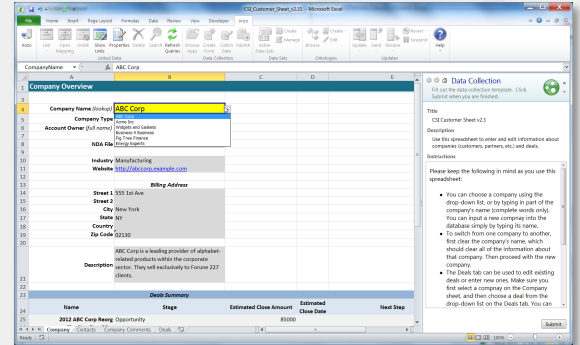
End-user data collection, collaboration, and reporting in Excel and on the Web

Anzo Express – Simple Semantic Web Platform

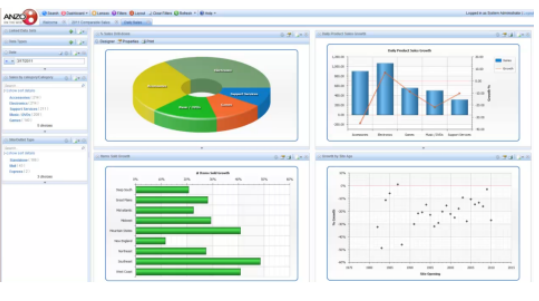
Anzo Express is the easiest and quickest way to get started using Semantic Web technologies. Anzo for Excel contains a sophisticated but easy-to-use OWL ontology editor. All data linked to Anzo Express—from spreadsheets or databases—is stored as RDF and can be accessed via SPARQL or published automatically as Linked Data. Finally, all data in Web-based dashboards is exposed automatically as RDFa.

Anzo for Excel

Anzo for Microsoft Excel combines the familiarity and ubiquity of Excel with the power and flexibility of the Anzo platform. Anzo for Excel provides two-way connectivity between data in spreadsheets and data connected to the Anzo Server. Anzo-powered spreadsheets are “live linked” to the data on the server, providing real-time updates as data flows through the system, so that Excel becomes a window to your enterprise data, rather than a way to work around it.



Anzo for Excel plugs right into Excel.



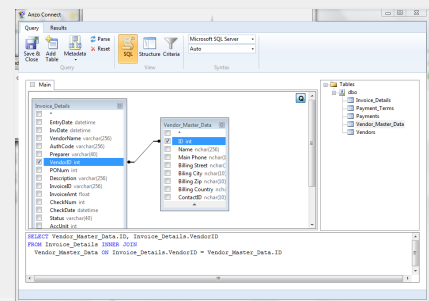
Anzo on the Web enables rich, interactive reports that are updated in real-time.

Anzo on the Web

Anzo on the Web is a web-based reporting tool enabling business users to create dashboards with tables, charts, drilldowns, and custom visualizations driven by filters, faceted browsing, and semantic search. When new data sources are added or requirements change, Anzo on the Web dashboards can be modified on-the-fly by end users without any configuration or coding. Complex metrics and analytics can be easily expressed and rapidly deployed using calculations based on Excel’s formula language.

Anzo Connect

Anzo Connect is a simple ETL framework that enables users and DBAs to rapidly link data in relational databases—such as MySQL, Oracle, DB2, and Microsoft Access—to Anzo. Once in Anzo, this data can be easily pulled into spreadsheets and reports. If the data gets updated in the databases, spreadsheets and reports are automatically updated, ensuring that they stay up-to-date without the tedious copying & pasting typically required.



Anzo Connect enables rapid integration of data in databases with Anzo.

Download Anzo Express and Get Started for Free!

<http://bit.ly/L2DDmD>

